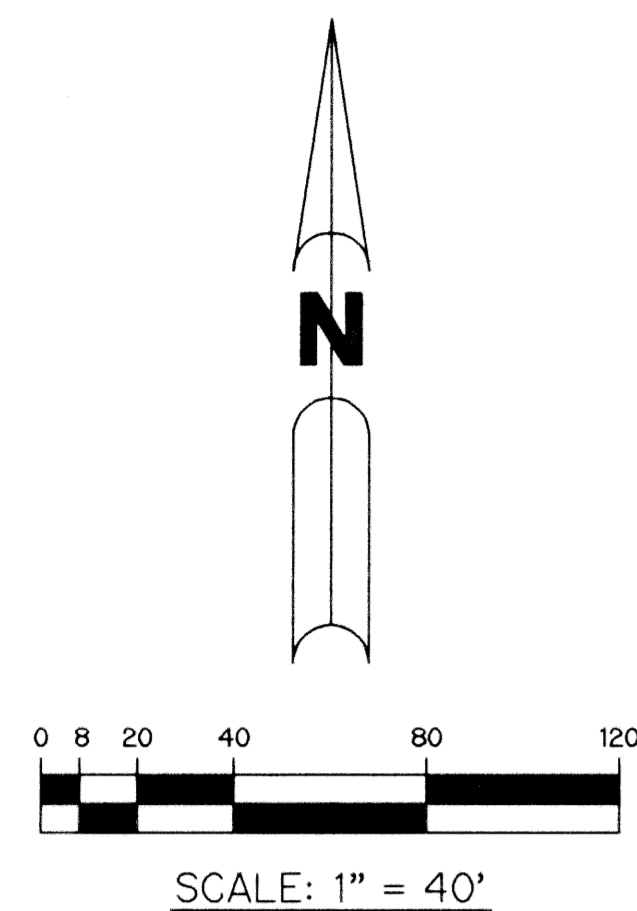


RIVERWALK - PLAT TEN

A PARCEL OF LAND LYING IN SECTION 21, TOWNSHIP 43 SOUTH,
RANGE 42 EAST, CITY OF WEST PALM BEACH,
PALM BEACH COUNTY, FLORIDA.

SHEET 2 OF 3 MARCH, 1998



POINT OF BEGINNING
SOUTHWEST CORNER
RIVERWALK - PLAT NINE
P.B. 82, PGS. 55-58

LIMITS OF PLAT

RIVERWALK - PLAT NINE
P.B. 82, PGS. 55-58

N78°55'54"E

1017.27' (TOTAL)

N.P.B.C.I.D.
FLOWAGE EASEMENT
O.R.B. 9459, PG. 664

MATCH LINE
SEE SHEET 3

TRACT "L2"
WATER MANAGEMENT TRACT

(SHALL BE MAINTAINED BY RIVERWALK OF THE
PALM BEACHES HOMEOWNERS ASSOCIATION, INC. WITHOUT
RECOURSE TO NORTHERN PALM BEACH COUNTY IMPROVEMENT
DISTRICT AND THE CITY OF WEST PALM BEACH)
7.496 ACRES

TRACT "A"
(ALSO AN INGRESS-EGRESS EASEMENT IN
FAVOR OF THE NORTHERN PALM BEACH
COUNTY IMPROVEMENT DISTRICT AND IN
FAVOR OF THE CITY OF WEST PALM BEACH
AND ALSO A PUBLIC UTILITY EASEMENT.)

LIMITS OF PLAT

OLYMPIA DRIVE
TRACT "A"

MATCH LINE
SEE SHEET 3

TRACT "L2"
WATER MANAGEMENT TRACT

(SHALL BE MAINTAINED BY RIVERWALK OF THE
PALM BEACHES HOMEOWNERS ASSOCIATION, INC. WITHOUT
RECOURSE TO NORTHERN PALM BEACH COUNTY IMPROVEMENT
DISTRICT AND THE CITY OF WEST PALM BEACH)
7.496 ACRES

UNPLATTED

LIMITS OF PLAT

UNPLATTED

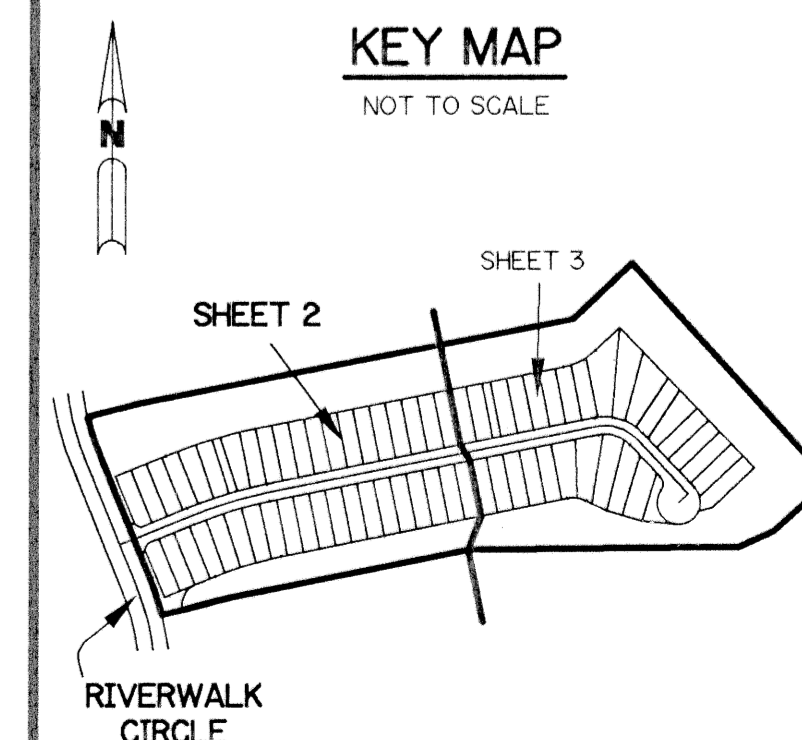
LEGEND:

- - FOUND PERMANENT REFERENCE MONUMENT, PLS #4213
- - FOUND PERMANENT CONTROL POINT, PLS #4213
- ▲ - SET PERMANENT REFERENCE MONUMENT, PLS #4213
- ◆ - SET PERMANENT CONTROL POINT, PLS #4213
- - SET 5/8" IRON ROD WITH CAP LB 6674
- △ - DELTA ANGLE
- B.E. - BUFFER EASEMENT
- D.E. - DRAINAGE EASEMENT
- D.W.E. - DRAINAGE, WALL & LANDSCAPE EASEMENT
- L - ARC LENGTH
- L.M.E. - LAKE MAINTENANCE EASEMENT
- N.P.B.C.I.D. - NORTHERN PALM BEACH COUNTY IMPROVEMENT DISTRICT
- NR. - NOT RADIAL
- N.T.S. - NOT TO SCALE
- O.R.B. - OFFICIAL RECORD BOOK
- P.B. - PLAT BOOK
- PGS. - PAGES
- P.L.S. - PROFESSIONAL LAND SURVEYOR
- P.S.M. - PROFESSIONAL SURVEYOR AND MAPPER
- R - RADIUS
- R.E. - RIVERWALK EASEMENT
- R/W - RIGHT-OF-WAY
- S.T. - SURVEY TIE
- U.E. - UTILITY EASEMENT
- CB - CHORD BEARING
- C - CHORD DISTANCE

⊗ - INDICATES COMMON BUILDING LINE

KEY MAP

NOT TO SCALE



THIS INSTRUMENT PREPARED BY
PERRY C. WHITE, P.S.M. 4213, STATE OF FLORIDA
LAWSON, NOBLE AND WEBB, INC.
ENGINEERS PLANNERS SURVEYORS
420 COLUMBIA DRIVE
WEST PALM BEACH, FLORIDA
LB 6674

SUBDIVISION # Riverwalk #10
 BOOK 83 PAGE 86
 FLOOD MAP
 ZONING
 ZIP CODE
 PUD NAME City of West Palm Beach